

AN INTEGRATED ECOSYSTEM MANAGEMENT APPROACH TO CONSERVE BIODIVERSITY AND MINIMISE HABITAT FRAGMENTATION IN THREE SELECTED MODEL AREAS IN THE RUSSIAN ARCTIC (ECORA PROJECT)



117218, Moscow, Krzhizhanovsky st., 24/35, build.4, phone/fax 8(495)719-0301, e-mail: ecohealth@mtu-net.ru



The long-term development objective of ECORA is the conservation and sustainable use of biodiversity in the Russian Arctic. The immediate objective of the project is to develop and implement integrated ecosystem management (IEM) strategies and action plans in three model areas representing different ecosystems and anthropogenic pressures in the Russian Arctic.

The expected major outcomes of ECORA include:

- Development of background for IEM;
- Development of IEM plans and strategies in model areas;
- Pilot projects to test IEM implementation strategies

A great volume of baseline environmental and socio-economic information has been gathered from the three Model Areas. Emphasis now will be on developing draft IEM strategies and action plans for each Model Area, and pilot studies to test the draft plans.

The strategies and action plans will be developed in consultation with stakeholder groups via public consultations and workshops. These are expected to undergo a number of revisions before their formal adoption.

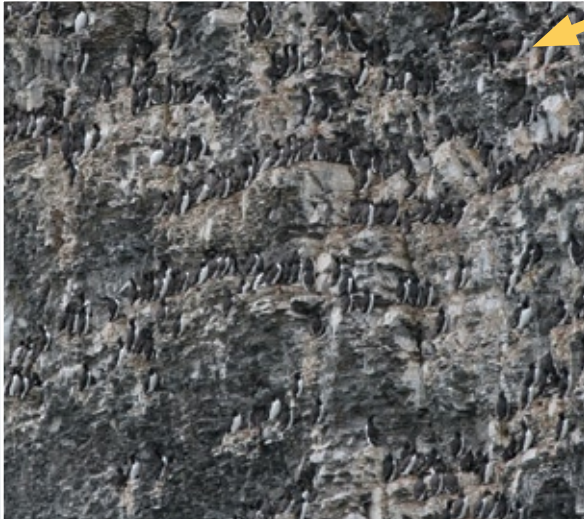
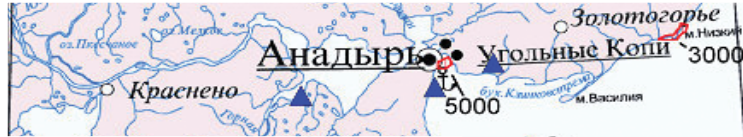




AN INTEGRATED ECOSYSTEM MANAGEMENT APPROACH TO CONSERVE BIODIVERSITY AND MINIMISE HABITAT FRAGMENTATION IN THREE SELECTED MODEL AREAS IN THE RUSSIAN ARCTIC
BERINGOVSKY DISTRICT MODEL AREA, CHUKOTKA



Marine birds — a group of key species for environmental monitoring of Beringovsky model area



SEA BIRD COLONIES AND DISTRIBUTION OF THREATENED SPECIES OF RAPTORS

- 3000 - колонии морских птиц и оценка их численности
- места массового летне-осеннего скопления орлана-белохвоста
- места гнездования и регулярных встреч сапсана и кречета



Scientific and community based monitoring of biodiversity is an important part of ECORA Project.

The Project cooperates with CBMP.



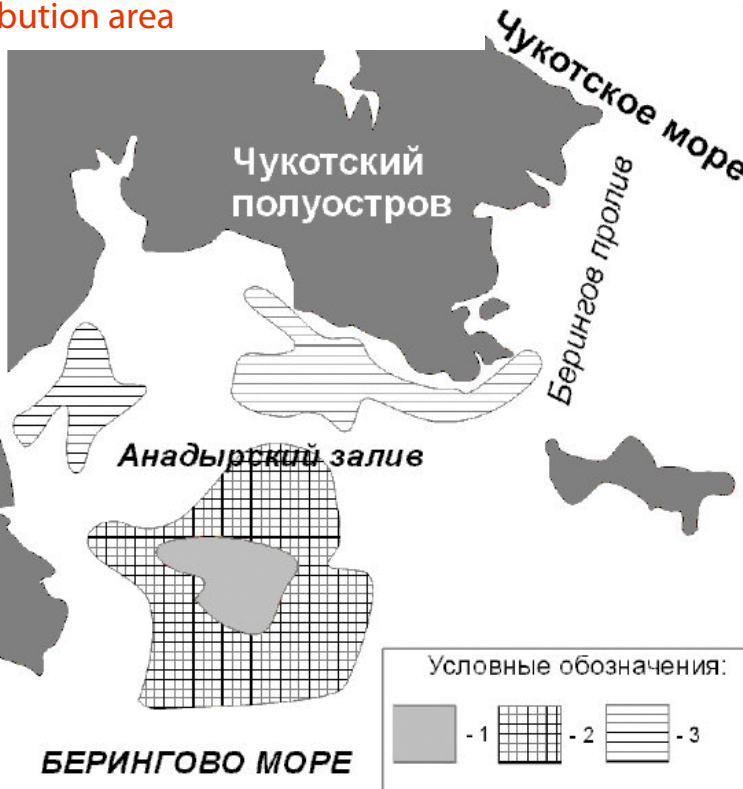
Please specify what birds you have gamed and also what eggs harvested



The anonymous questionnaire of the hunter



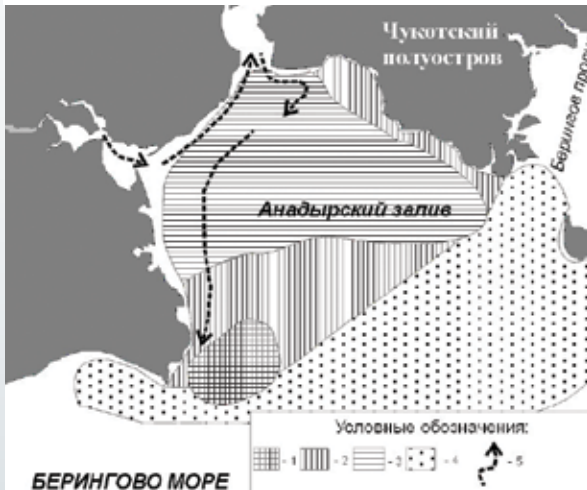
Pacific walrus distribution area



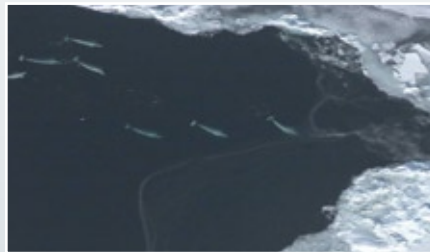
Monitoring of globally threatened species of marine mammals as the key indicator for integrated ecosystem management.



Beluga distribution area



Herd of Grey and Greenland whales, Belugas, Pacific walrus and seals play an invaluable role in a life of indigenous population of coastal settlements which ability to live long since was based on traditional sea hunting. Chukotka is unique region of the Russian Federation where indigenous sealing is a defining part of bioresources supply for indigenous people.



Review of the main threats to the sea mammals of Southern Chukotka

- Oil exploration
- Risk of destruction of radioisotope thermoelectric generators
- Plans of accommodation of seashore floating atomic power stations
- Tourism as the factor of disturbance for coastal rookeries of walrus
- Poaching, irrational technologies in fishery (overfishing, by-catch, benthal trawling)





AN INTEGRATED ECOSYSTEM MANAGEMENT APPROACH TO CONSERVE BIODIVERSITY AND MINIMISE HABITAT FRAGMENTATION IN THREE SELECTED MODEL AREAS IN THE RUSSIAN ARCTIC

BERINGOVSKY DISTRICT MODEL AREA, CHUKOTKA

During project implementation it is supposed to demonstrate how introduction of relevant strategies on the integrated environmental management (IEM), being a part of national policy and one of its priorities, will allow to reach simultaneously the environmental, economic and social benefits both - on local, and on a global scale. Prospective results of the project will include IEM strategies and action plans in three selected model areas of the Russian Arctic. A number of activities will be carried out within the framework of the project to support the developed IEM strategies and action plans. These actions are: assessment of biodiversity and social and economic conditions, target training programs, development of proposals on the strengthening of legislative, administrative and institutional conditions, special measures on preservation of biodiversity and sustainable use of natural resources, including implementation of pilot projects. Approaches applied during implementation of the project and its outputs, including developed IEM strategies and action plans could be applicable in other areas of the Russian Arctic and in the whole circumpolar region.



Anthropogenic impact and environmental protection



Pollution of atmosphere, destruction of a vegetative cover of tundra, uncontrollable fishing and hunting for marine mammals can destroy a basis of traditional nature use of indigenous people of peninsula and sustainable conditions of wildlife in Chukotka.

